

Slingsby Sailplanes Ltd., Kirbymoorside, York.

17.12.62.

Technical Instruction No. 11.

Skylark Mod. No. 99

Installation of Canopy Catch 50-1-110 On Skylark 2 & 3 Aircraft

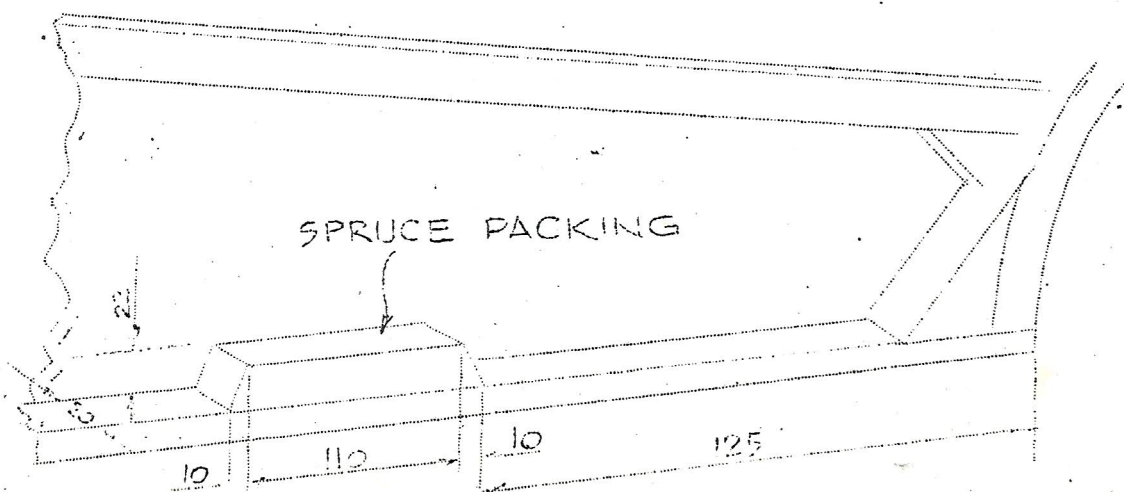
The following modification has been called for by the technical committee of the British Gliding Association and requires the replacement of the canopy catch on all marks of Skylark 3 aircraft and on Skylark 2 A/C:-

<u>Works No.</u>	<u>B.G.A. No.</u>	<u>Works No.</u>	<u>B.G.A. No.</u>
1001 - 9	- A.R.B.	1112	826
1010	- (Australia)	1113	822
1016	- (N.Z.)	1128	827
1017	- A.R.B.	1135	845
1044	764	1137	862
1048	759	1146	- (R.N.G.S.A.)
1049	- A.R.B.	1194	-
1064	- A.R.B.	1197	872
1065	- A.R.B.	1199	889
1068-71	- A.R.B.	1218	- A.R.B.
1073	778	1220	933
1075	774	1228	1002
1081	779	1233	919
1089	- (N.Z.)	1239	923
1099	784	1248	946
1104	810	1252	944
1108	814	1273	947

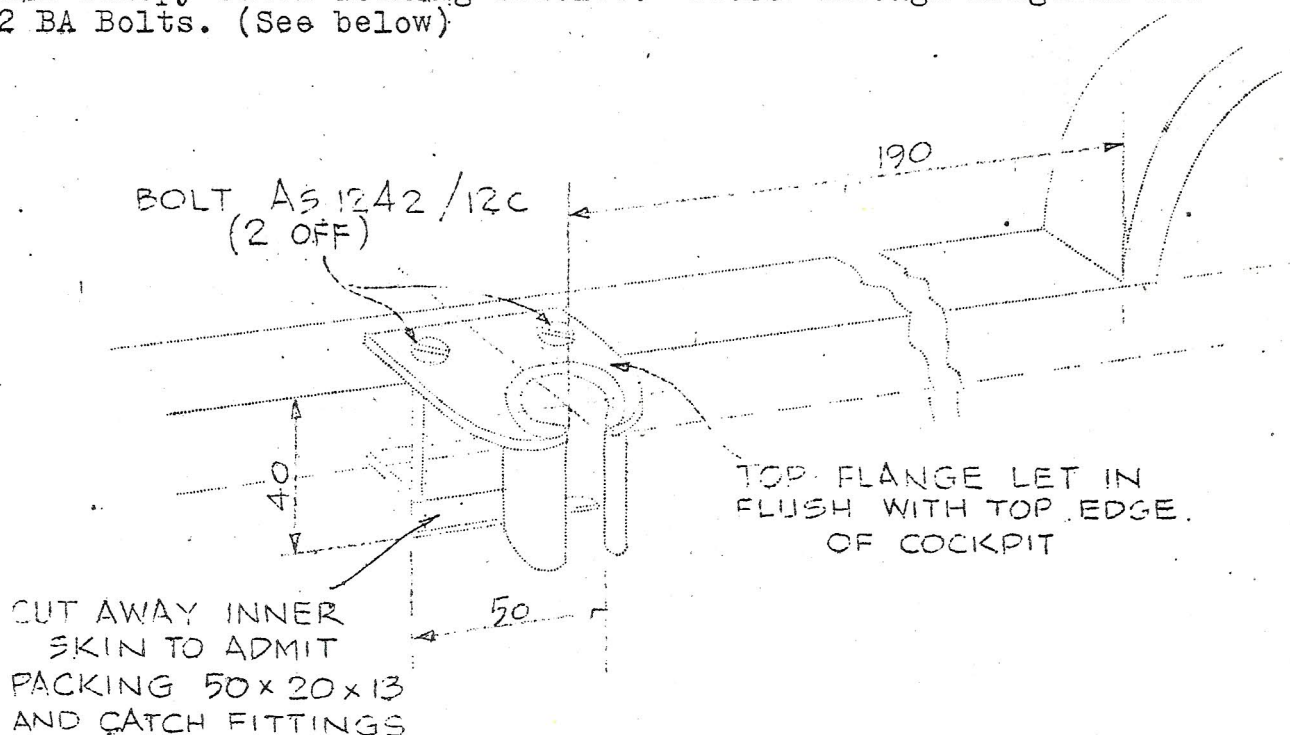
Certificates of airworthiness will not be renewed by the British Gliding Association after the first of January 1963 unless the modification has been incorporated.

Procedure.

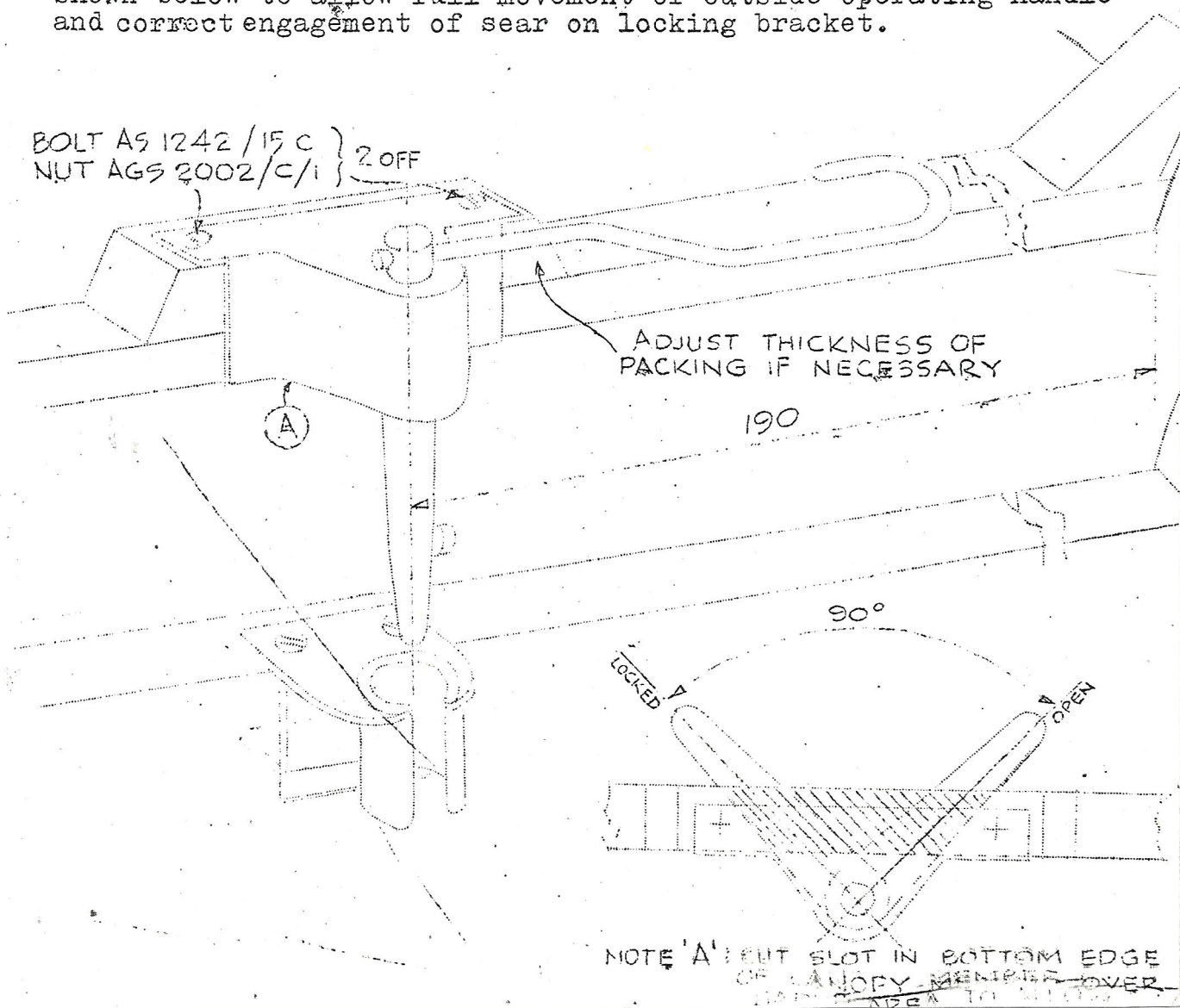
1. Remove the existing canopy catch and packing pieces from the port side of the cockpit and canopy.
2. Fit spruce packing member for canopy catch operating mechanism on canopy lower member as shown below



3. Cut away inner skin in cockpit to admit packing 50 x 20 x 13 and canopy catch locking bracket. Drill through longeron for 2 BA Bolts. (See below)



4. Bolt canopy catch locking bracket in position.
5. Cut slot in lower surface of lower canopy member 1/8" deep and approx 50 mm wide to allow entry of outside catch operating handle. Slide canopy catch operating mechanism onto member and locate so that alignment with locking bracket on fuselage is achieved. Enlarge slot in lower surface of canopy member as shown below to allow full movement of outside operating handle and correct engagement of sear on locking bracket.



6. Disengage sear catch and raise canopy without moving the flanges of the canopy catch operating mechanism on the canopy member.
7. Mark through the holes in the bottom flange of the canopy catch operating mechanism and after removing the canopy from the aircraft drill through the canopy bottom member for 2 B.A. bolts.
8. Bolt in position after finally checking that correct engagement and release take place with the bracket on the cockpit side. This completes the modification.

Kit of Parts.

Kits of parts are obtainable from Slingsby Sailplanes Ltd and comprise of the following items:-

Complete canopy catch ref: 50-1-110	- 1 off.
Bolt AS 1242/15C	- 2 off.
Bolt AS 1242/12C	- 2 off.
Nut AGS 2002/C/1	- 2 off.
Spruce 130 x 22 x 20	- 1 off.
Spruce 50 x 20 x 13	- 1 off.

Cost of complete kit £5-4-6 Ex. works.

Entry in Log Book.

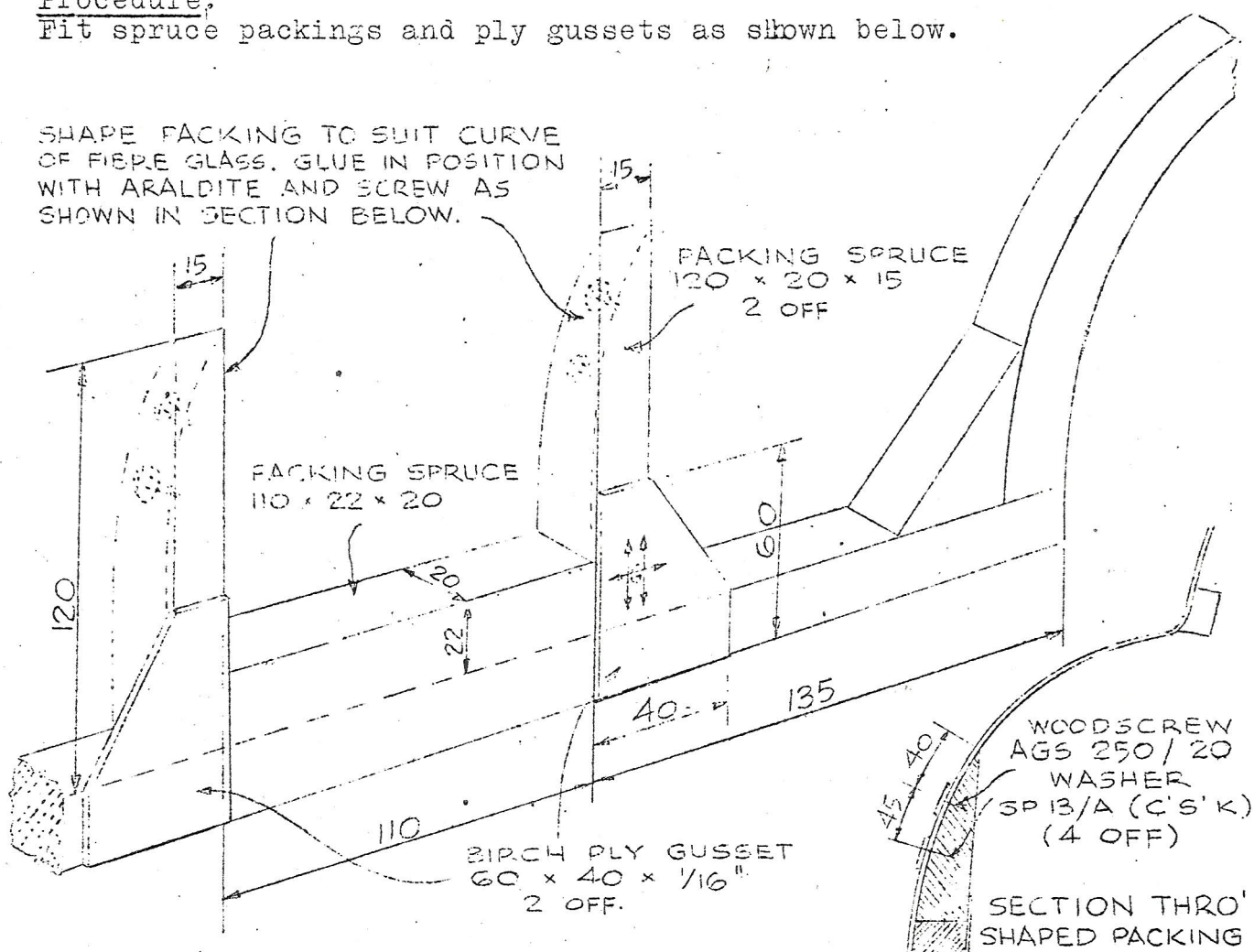
Details of modification and date on which it was incorporated should be noted in the aircraft log book.

Addenda To Tech. Inst. No. 11.Skylark Mod. 99

Addendum 1 - Affects aircraft with moulded fibreglass canopy's, and is intended to reduce the flexibility of the fibreglass caused by operation of the new type 50-1-110 canopy catch.

Procedure.

Fit spruce packings and ply gussets as shown below.



Having fitted the above packing pieces the rest of the installation should be completed as directed on Technical Instruction No. 11.